

Weathering Change: becoming climate ready in north Glasgow

About Weathering change
An action research project that aims to bring people and organisations together to consider possible actions that can support north Glasgow to become more climate ready.

Action research
• An evolving and flexible approach to learning captured throughout project



Purpose+
process

Key
learning

	Scoping	Community engagement	Sharing the learning	Collaborative opportunities	Beyond Weathering Change
	Autumn 2015	Spring 2016	Summer 2016	Autumn 2016	Summer 2017...
	<p>Local context important in shaping design of project</p> <p>• Opportunity to shape emerging strategic plans through project</p> <p>• Adding to, and picking up existing activity, seen to be the most effective way of having an impact</p> <p>• 'Theory of change' influenced by improved understanding of context, priorities of local organisations and immediate situation, plans for action</p>	<p>Climate change not an immediate priority</p> <p>• Climate change not seen as an immediate priority by most participants</p> <p>• Climate change seen as a long-term issue, requiring long-term action</p> <p>• Climate change seen as a complex issue, requiring complex action</p>	<p>There are opportunities and a willingness to work together</p> <p>• New strategies emerging for North Glasgow - active travel, land-use, mapping/planning</p> <p>• Large scale projects/commitments in the pipeline - Glasgow/Thinking Places/City Deal</p> <p>• Local organisations can work together, co-ordinating opportunities, funding links, aligning related projects</p>	<p>Workshop Recommendations</p> <p>• Develop a local climate resilience plan</p> <p>• Develop a local climate resilience plan</p> <p>• Develop a local climate resilience plan</p>	<p>How can we ensure greater buy-in from organisations?</p> <p>• BCCA coordination</p> <p>• BCCA coordination</p> <p>• BCCA coordination</p>

About Weathering change

An action research project that aims to bring people and organisations together to consider possible actions that can support north Glasgow to become more climate ready.







Flooding problems in Scotland hit travellers



KEVIN MCLAUGHLIN

Flash flooding caused problems for drivers on Saracen Street in Glasgow



Action research

- An evolving and flexible approach: learning captured throughout project and feeding into how it develops.
- **Local learning:** What have we learned that can be actioned in north Glasgow?
- **Process learning:** What has worked well and what would we do differently?

Methods/sources of data

- Existing data/strategies
- Community consultation
- Reflective diaries: Engagement shaped by learning from previous sessions
- Data captured from meetings and workshops
- Semi-structured interviews

Scoping

Autumn 20 15

- To understand local context
- To identify opportunities to work with local organisations
- To understanding strategic priorities of statutory organisations
- To develop a 'Theory of Change'.

Local context important in shaping design of project

- Several local groups were already undertaking environmental work/projects in north Glasgow - activities are not well joined up.
- Opportunity to shape emerging strategic plans through project.
- Adding to, and joining up existing activity, seen to be the most effective way of having an impact.
- 'Theory of change' informed by improved understanding of context, priorities of local organisations and emerging strategic plans for area.

Community engagement

Spring 20 16

- What are the key local issues for people and how might these be affected by a changing climate?
- Six engagement sessions held throughout north Glasgow.
- Pop-up engagement station with interactive materials.
- Engaged with 9S residents.



Climate change not an immediate priority

Priorities for improvement:

- employment
- opportunities for young people
- environmental conditions
- local facilities
- transport
- food options

Strong sense of belonging, but lack of investment over a number of years has strained the relationship between local people and statutory organisations.

General belief that climate change is happening, but people feel...

- Powerless to do anything *'you just need to get on with it'*
- Burdened with a problem that they did not create.

Sharing the learning

Summer 20 16

- Sharing the learning with local and statutory organisations through meetings and workshops:

Statutory

- Glasgow City Council
(various departments)
- NHS GGC - Thriving Places
- Scottish Canals

Local

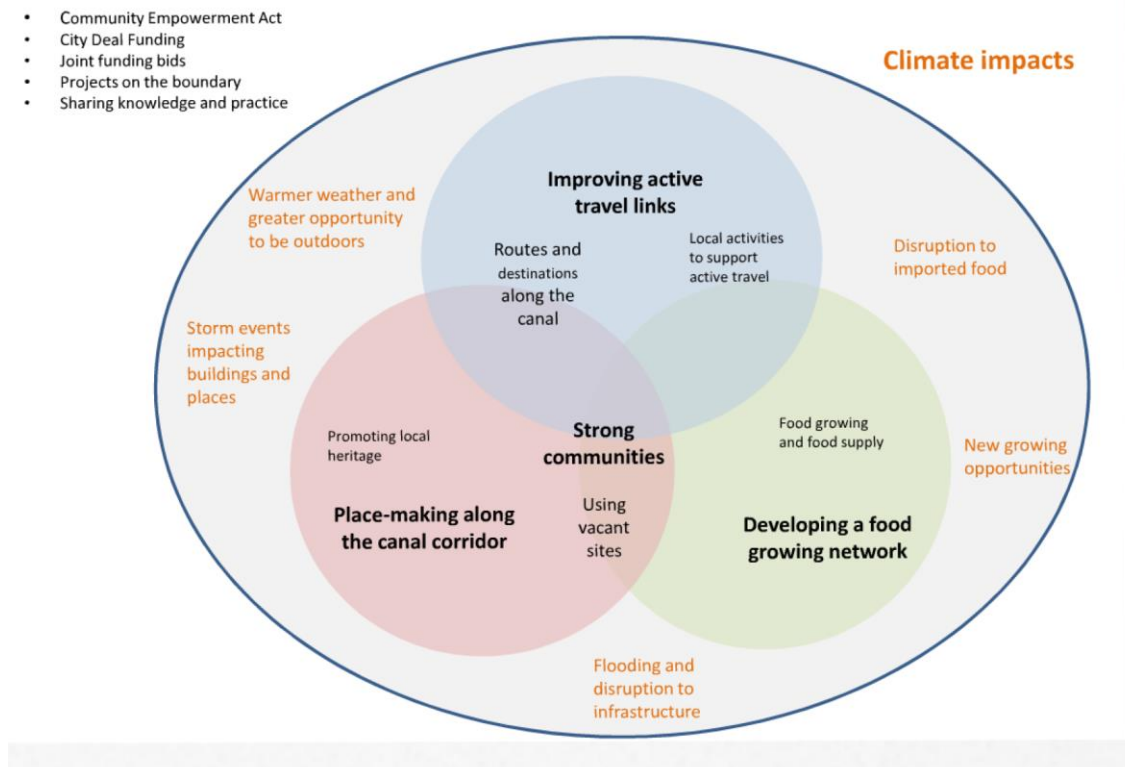
- Lambhill Stables
- Love Milton
- Concrete Garden
- Friends of Possilpark
Greenspace
- NGCFI

- Identifying opportunities to work collaboratively where there are shared ambitions.

There are opportunities and a willingness to work together

- New strategies emerging for north Glasgow - active travel, land-use, masterplanning
- Large scale projects/partnerships in the pipeline - Claypits/Thriving Places/City Deal
- Local organisations can work together: volunteering opportunities, funding bids, aligning related projects
- Linking up food growing activities
- Making north Glasgow the "place to go" for expertise on green, sustainable matters.

- Developed a 'matrix of opportunities' based on wants, offers and identified priorities.
- Matrix revised following further meeting with bcal organisations, Canal Partnership and Glasgow City Council.
- Identified three keys priorities to inform workshop in December 2016:
 - Improving active travel links
 - Developing a food growing network
 - Building on placemaking opportunities along the canal corridor



Workshop Recommendations

- Progressing a food growing network for north Glasgow
- Expanding the Milton partnership work to include Lambhill in advance of Thriving Places
- Facilitating conversations around the use of VDL between organisational partners and community organisations.
- Community organisations are involved in future conversations and strategic developments in relation to active travel improvements.

Write up and wider learning

- Write up by summer 2017 - GCPH responsibility
- Learning feeding into development of 'Climate ready places and communities' guidance to support organisations.

